

Chalet Assembly Instructions

Tools needed for assembly:

- two 9/16" wrenches (or one 9/16" socket and one 9/16" wrench)
- one 1/2" wrench
- one 1/8" allen wrench (size may vary)
- Phillips screwdriver
- 1/4", 5/16", 7/16" nut driver or socket & ratchet
- Electric or cordless drill
- Gloves (2 pair)
- Pliers or visegrip

Hardware included:

Frame & Lift:

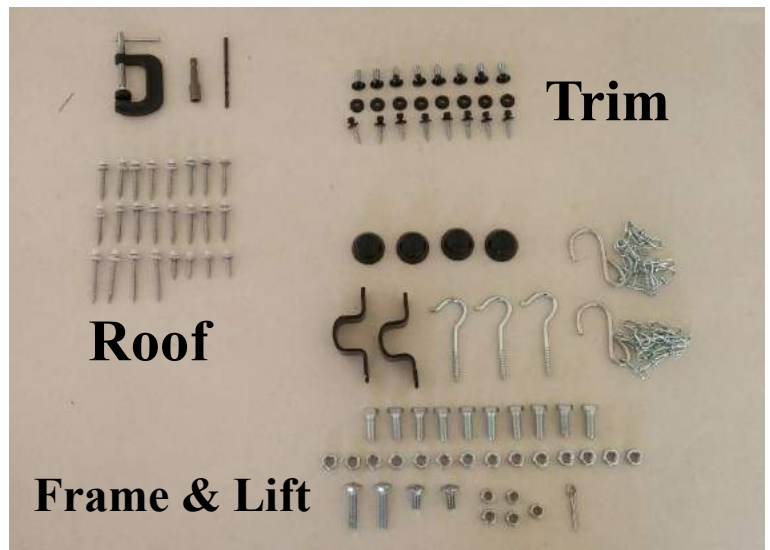
1. 3/8"x 1" Hex bolts (10)
2. 3/8" nuts (14)
3. 5/16"x 1 1/2" carriage bolts (2)
4. 5/16"x 3/4" carriage bolts (2)
5. 5/16" nylock nuts (5)
6. Axle caps (4)
7. 3/16" cotter pin (1)
8. U-clamps (2)
9. Ceiling hooks (3)
10. Chains with S hooks (2)

Roof:

1. 1 1/2" washered screws (16)
2. 1" washered screws (4)
3. 2" washered screws (4)
4. C-clamp
5. 5/32" drill bit (1)
6. 5/16" driver bit (1)

Trim:

1. Black washered screws (8)
2. 1/4"x 3/4" black carriage bolts (8)
3. 1/4" black flange nuts (8)



You will need to have another person to help you with assembly. For ease of assembly, the unit should be assembled on a flat, level surface. If you have the proper tools and a helper you can expect it to take approximately three hours.

Step-by-Step Instructions



- 1.) Lay out the two end and rear frame pieces of the Chalet with the tops to the outside.



- 4.) Fasten the front piece to the ends using four 3/8" by 1" bolts. & nuts (top bolts already installed).



- 2.) Fasten the rear frame piece to the right end piece with two 3/8" x 1" bolts, one at the top (already installed) and the other at the bottom. For now, only finger-tighten the bolts & nuts.



- 5.) Using a 9/16" socket and wrench, firmly tighten the eight bolts holding the frame in place, carefully aligning the corners of the Chalet.



- 3.) Repeat step #2 for the left end piece.



- 6.) With the help of another person, lower the floor into the frame, tipping the front side down as you lower the floor. The floor should rest on the angle iron tabs with the opening in the floor toward the rear left.



7.) Cut the plastic zip tie that holds the ramp in the up position for shipping. Hold the cable to lower the ramp to the floor.



8.) Install the T-handle latch on the outside of the right door with the screws provided.



9.) Turn the T-handle to the vertical position and install the inside catch horizontally so that the short side of the D-handle overlaps the center doorstop. Tighten it with a 1/8" allen wrench. Follow the same procedure on the left door.



10.) Slide the front lift frame under the left end of the Egg Cart'n and fasten it to the main frame with two 3/8" x 1" bolts, one at each end of the lift frame. Tighten the bolts securely (*note: insert the bolts from the inside and secure the nuts on the outside to leave room for skirting*). Slide the front wheel assembly onto the shaft of the lift frame and insert the large cotter pin below the axle.



11.) Fasten the rear axle using two U-shaped brackets and four 3/8" x 1" bolts. Insert the bolts from the inside and secure the nuts on the outside to leave room for skirting.



12.) Install the lift cable on the rear wheel assembly using 5/16" x 1 1/2" carriage bolts and lock nuts. Use the vise-grip or pliers to keep the head of the carriage bolt from turning. Then install the lift cables on the levers of the front lift frame using 5/16" x 3/4" carriage bolts and lock nuts.



13.) Slide two wheels onto the front axle and secure with small cotter pins. Slide two wheels onto the rear axles and secure with small cotter pins.



14.) Install the lift cylinder by pushing down on the tongue until the bolt lines up with the free end of the cylinder. Slide the cylinder onto the bolt and loosely secure it with a 5/16" lock nut.



- 15.) Install the three ceiling hooks in the designated pre-drilled holes—two in the left roof section and one in the right roof section.



- 16.) Using a C-clamp, securely fasten the temporary roof support on top of the front frame, centered above the door post (as illustrated).



- 17.) Install the left roof section (with 2 ceiling hooks), allowing the front to rest on the temporary roof support followed by the right side.



- 18.) Using a nut driver or screw gun, fasten the roof from the outside at all four corners using 2" wood screws.



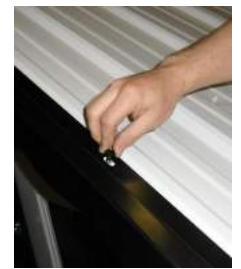
- 19.) Install the gable panel without the window on the back side. Use 1 1/2" washered screws and fasten using the pre-drilled holes along the top slope.



- 20.) Install one of the white aluminum gussets with six 1 1/2" washered screws.

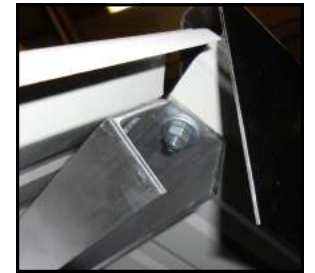


- 21.) Fasten the bottom of the gable panel. Using the 5/32" drill bit provided, drill through the two pre-drilled holes at the bottom of the panel through the aluminum tab. Using a 1/4" nut driver, secure the 1" white washered screws by hand.



22.) Remove the temporary roof support and install the roost on the tabs as illustrated.

26.) To install the scalloped gable trims, begin on the front righthand side by inserting the two black 1/4" X 3/4" carriage bolts in the slots in the trim and roof pieces. For now only finger tighten the nuts.



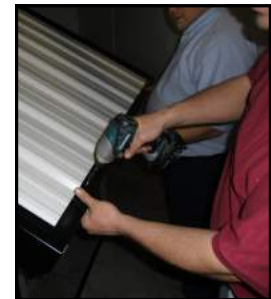
23.) Install the gable panel with a window on the front. Use 1 1/2" washered screws and fasten through the pre-drilled holes along the top slope.

27.) Install the lefthand scalloped trim next, repeating the procedure in #25. Now align the two pieces of trim at the peak and tighten the flange nuts on all four bolts

28.) Repeat steps 25 & 26 to install the scalloped trim on the back.



24.) Install one of the white aluminum gussets with four 1 1/2" washered screws.



25.) Fasten the bottom of the gable panel. Using the 5/32" drill bit provided, drill through the two pre-drilled holes at the bottom of the panel through the aluminum tab. Using a 1/4" nut driver, secure the 1" white washered screws by hand.

29.) Using a drill and the 1" black washered screws, install the bottom angle trim pieces by screwing through the predrilled holes into the rib of the metal roof.



30.) Using a drill and the 1" black washered screws, install the peak trim pieces by screwing through the predrilled holes into the rib of the metal roof.



31.) Place the nest against the back wall, centered in front of the EZ access door. The protruding screws fit into the floor to hold them in place. Hang the feeder and watering bucket from the brackets on the ceiling at the desired height using the provided chains & S hooks.



The flower box is functional and holds three standard four-inch plastic pots.



To install the end panels and skirting, place the panels against the wire mesh and secure with retaining rods. On the end panels, install the short piece of skirting on the bottom with the aluminum strip to the back and the taller piece on top.

The Chalet is now ready for use. To raise it up on its wheels, push down on the tongue until it nearly touches the ground. Now move the tongue to the right or left approximately 6 inches to allow the latch to drop and catch the top of the shaft, thereby latching it into place for moving. To lower the Egg Cart'n, return the wheels to the straight forward position, then push down on the tongue until the latch pops up and allows the unit to lower as the tongue raises. **Always use both hands to operate the EZ lift system on the Chalet.**

Feed is an important consideration. Though chickens will benefit from grazing and scratching there is not adequate nutrition in grass, weeds, bugs, and dirt for a hen to produce consistently. You can choose from a variety of organic, natural, or medicated feeds depending on your preference and the needs of your little flock.

For bedding in the nest box we have found that floor-dry, a product that mechanics use to dry up oil spills, works well. It is generally a natural product made of dried clay, inexpensive and readily available at any auto parts store. It helps to dry up any moisture, and its texture deters the hens from playing in it like they sometimes will in straw.

The Chalet has been designed with aesthetics, utility, and longevity in mind. It should give you many years of trouble-free service. Should you have any questions please feel free to contact us.

Warning: When moving the Chalet on a hill, always follow the contour of the hill to avoid losing control. Children should not use this product without adult supervision.

Quail Manufacturing
9815 W. Trail West Rd.
Partridge, KS 67566
620-567-3301
www.eggcartn.com